

# 2020 Annual Report



American Hippotherapy Association, Inc.  
Treatment with the help of the horse

970.818.1322 | [www.americanhippotherapyassociation.org](http://www.americanhippotherapyassociation.org) | Fort Collins, CO

## MISSION

---

Improve lives by advancing education, best practices and resources for licensed healthcare professionals who incorporate horses in therapy.

## VISION

---

To have skilled therapy services that incorporate horses readily available to every person who has the potential to benefit.

## CORE VALUES

---

### *INTEGRITY*

Commitment to the highest standards of personal, ethical, and professional behavior.

### *ACCOUNTABILITY*

Commitment to good stewardship, transparency, and fiduciary responsibility.

### *INNOVATION*

Promoting advances in treatment and research.

### *EXCELLENCE*

Promoting the highest caliber of programs and resources.

## About the AHA, Inc.

---

The American Hippotherapy Association, Inc. (AHA, Inc.) is a 501C3 non-profit organization, which provides resources and continuing education courses for occupational therapy, physical therapy and speech language pathology professionals who incorporate equines, equine movement, and the equine environment in treatment. The AHA, Inc. believes that individuals in need of habilitation or rehabilitation are best served by skilled and licensed healthcare professionals. As such, AHA, Inc.'s primary focus is on educating licensed therapists about the inclusion of equines in treatment. In addition, we provide horse handling courses, and numerous resources for administrators, therapy professionals, and the public on treatment incorporating equines, including "Best Practice Statements" for the therapists who incorporate horses in treatment.

The AHA, Inc. that exists today, began in 1987 when a group of dedicated therapists traveled to Germany. Later, the AHA, Inc. became a section of the North American Riding for the Handicapped Association (NARHA). In 2003, AHA, Inc. separated from NARHA to incorporate as a separate 501C3 organization.

Today our membership is just over 1,000 national and international members. Evidence supporting the use of equine movement in treatment continues to grow, with eight systematic reviews, 103 peer reviewed articles, and 12 peer reviewed case studies that show support for the use of equine movement on the American Hippotherapy Association, Inc. reference list.



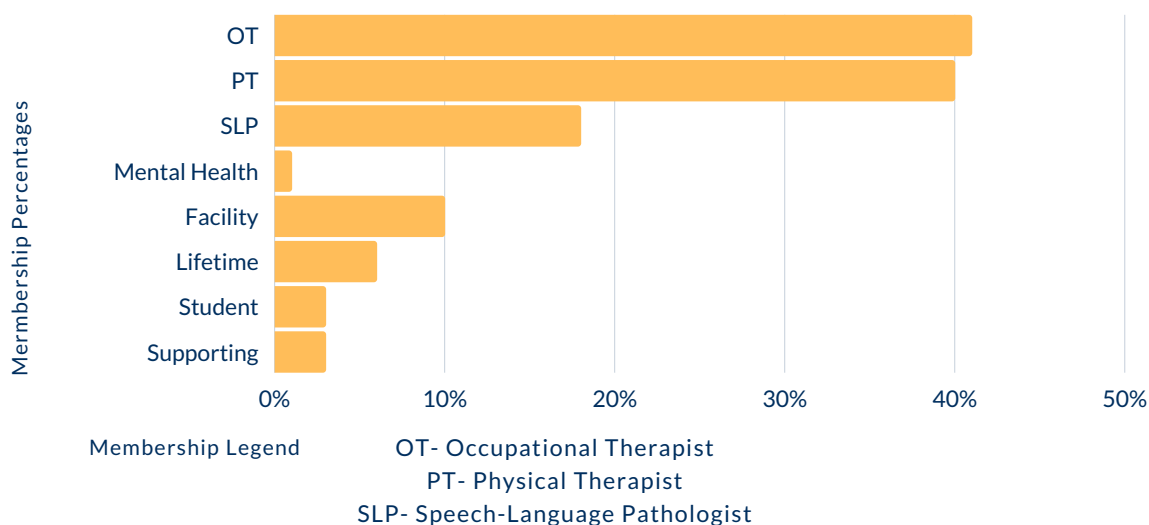
## OUR PROGRAMS

---

As an organization, AHA, Inc.'s membership encompasses healthcare professionals who offer physical therapy, occupational therapy, and speech-language pathology that use the horse as a tool in the therapy practice. We also have members from the mental health community, student members and supporting/business members.

### Who We Are

The AHA, Inc. serves members in all **50** states and **12** countries



### Professional Development Highlights During the year of the "great pause"

AHA, Inc.'s major focus is on offering educational opportunities to our members and the public. The course offerings include both in-person and online training opportunities. Our two foundation courses (Hippotherapy Treatment Principles Part I and Part II) focus on the use of hippotherapy as part of a comprehensive plan of care for patients. AHA, Inc. hosts a Biennial International Conference offering therapists exceptional content, networking opportunities, and the latest updates in research and therapy trends.

- Hippotherapy Treatment Principles – Part I Foundations Webinar
  - **10** Virtual courses held
  - **145** total participants

## OUR PARTNERSHIPS

---

*Networking and partnering with organizations with similar missions and values.*

Academy of Pediatric Physical Therapy (APTA Pediatrics)

American Quarter Horse Association (AQHA)

AQHA Foundation

American Horse Council (AHC)

Certified Horsemanship Association, Inc. (CHA)

Horses in Education and Training International (HETI)

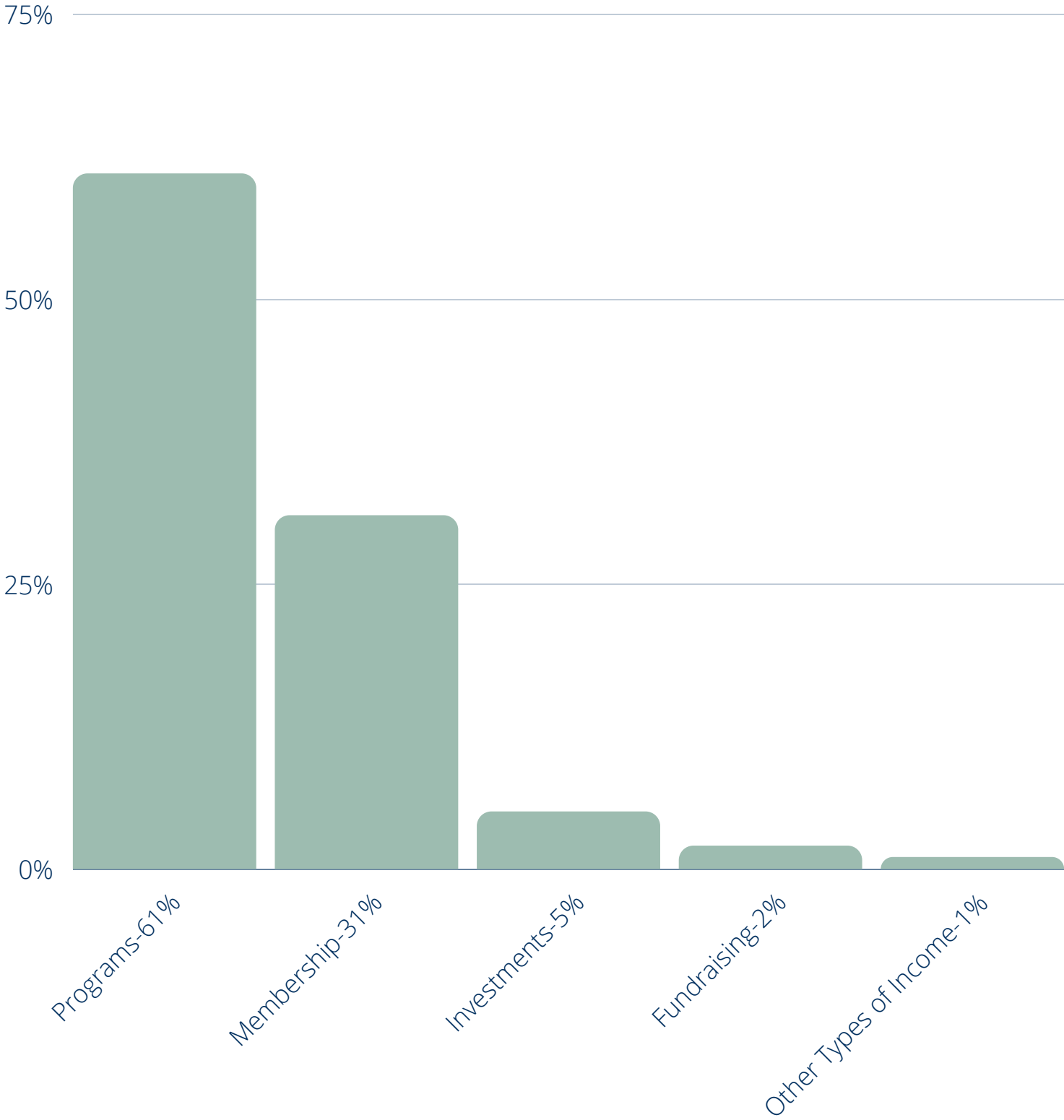
Horses and Humans Research Foundation (HHRF)

Professional Association of Therapeutic Horsemanship International (PATH Intl.)

Temple Grandin Equine Center at Colorado State University

# FINANCIAL STANDING

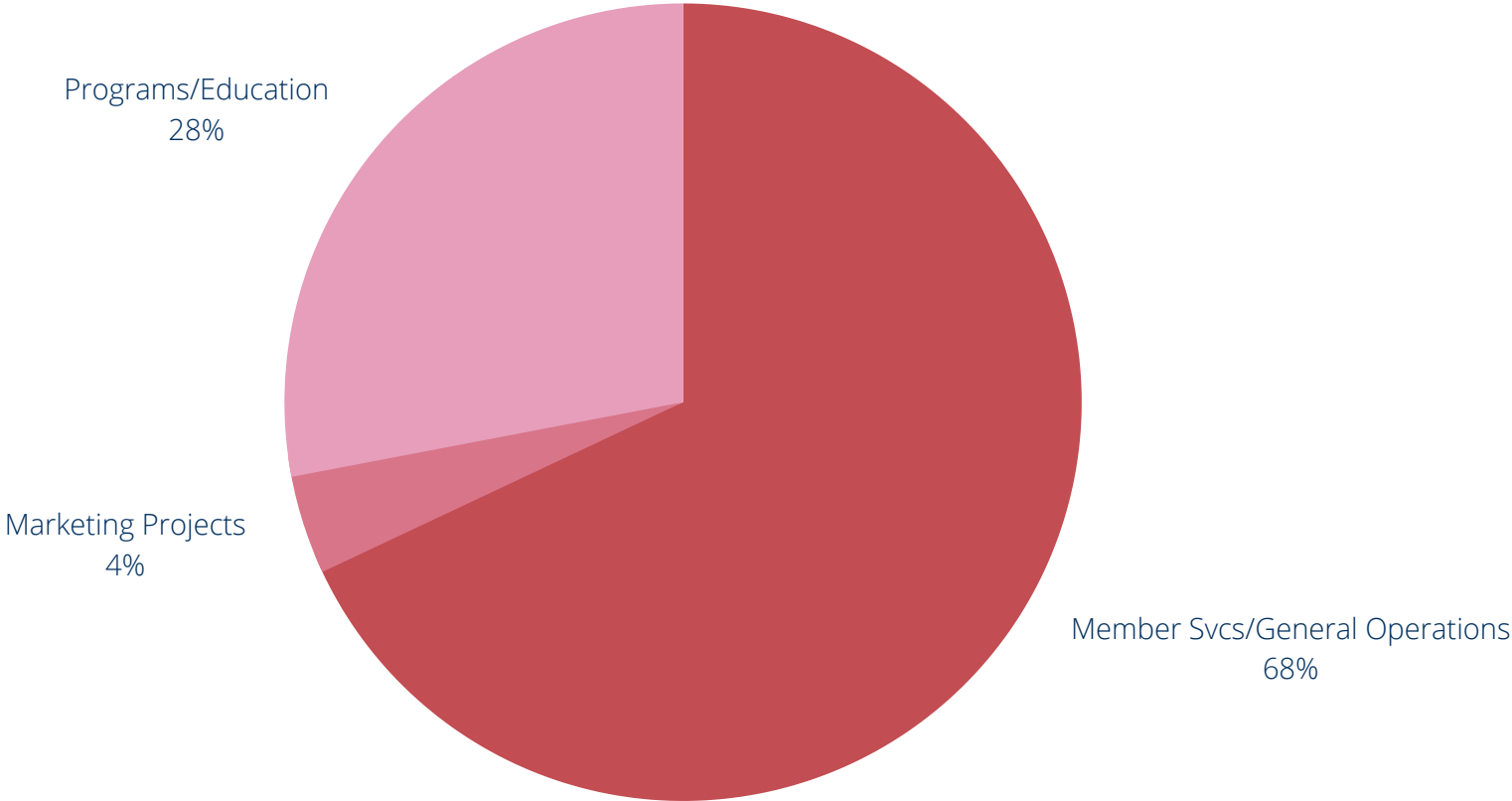
2020 Income



# FINANCIAL STANDING

---

## 2020 Expenses



## 2020 DONORS

---

### **\$500-\$1,000**

*Lauren Janusz*

### **\$100-\$500**

*Steve McKenzie*

*Kristine Kadash*

*Karen Gardner*

*Joann Benjamin*

*Joshua Rubin*

*Anonymous*

### **\$50-\$99**

*Yolanda Pawlyshyn*

*Michael George*

*Jason Brown*

## **Educational Endowment Funds**

The continuing investment of the Cunningham Mountain Valley Education Endowment with the Community Foundation of Northern Colorado helps our AHA, Inc. (initial investment of \$100,100.00) continue to grow.

The organization will realize a 4% disbursement of the investment revenue every year if we should wish to withdraw the funds.