

## Faculty

### **Bonnie Cunningham, PT, MA, MPA, HPCS**

Bonnie is a licensed Physical Therapist in the states of New York, New Jersey and Pennsylvania. She holds a Bachelor of Science and a Master of Arts in Physical Therapy and Master of Public Administration. Bonnie is a Certified as a National Assessor for riders interested in competing in National Events and the Paralympics. Bonnie is a Board Certified Clinical Specialist in hippotherapy, Coordinating Faculty for the American Hippotherapy Association, has taught internationally and presented at national conferences. Bonnie is practicing physical therapy using hippotherapy treatment strategies in private practice. Bonnie is a past president of AHA, Inc. and served as the first Executive Director.

### **Lori Garone, PT, MS, HPCS, DCE**

Lori is a Physical Therapist and Board Certified as a Clinical Specialist in Hippotherapy. She is a Coordinating Faculty for the AHA, Inc. for over 25 years, a 1990 Graduate Touro College of Health Sciences, and Bachelor's of Science Degree in Community Health Science and Master's of Science Degree in Physical Therapy. She had a physical therapy private practice on Long Island, New York for over 25 years specializing in treating the neuro pediatric population. Lori is a Professor and DCE at South University Virginia Beach, PTA Program, a member of APTA and a Lifetime member of AHA, Inc. She has been honored with the following awards: • 2010 Woman of the Year Distinguished Woman Award, Oyster Bay, Long Island, New York for her work in the Health Care Industry • 2013 AHA Inc. Barbara Glasow Therapist of The Year Award • She has served on the AHA Board of Directors in the following capacity: • 2017- Present- 2nd Vice President • 1996- 2010 served as Vice President, Education Chairperson, Standards and Practice Chairperson, Nominating Committee, Conference Committees.

## Course Location

Children's TherAplay Foundation  
9919 Towne Rd  
Carmel Indiana

## Travel Information

Indianapolis International Airport (IND)  
7800 Col. H. Weir Cook Memorial Dr  
Indianapolis, IN 46241

General Location: Children's TherAplay is located just 30 minutes north of the Indianapolis International Airport. It is about 5 minutes from Embassy Suites and the Holliday Inn, and about 10 minutes from the Drury Plaza Hotel.

### **Lodging Information**

Drury Plaza Hotel: Indianapolis/Carmel  
9625 N Meridian St Indianapolis, IN 46290  
(317) 587-2701

Embassy Suites by Hilton: Indianapolis North  
3912 Vincennes Rd. Indianapolis, IN 46268  
(317) 872-7700

Holliday Inn Express & Suites: Indianapolis North –  
Carmel 9797 N Michigan Rd Carmel, IN 46032  
(317) 661-3540

## Pre-requisite

**AHA Inc. Level I and Level II. Please send copy of certificate with registration**

## Intended Audience

**This course may be attended by licensed Speech-Language, Physical and Occupational therapists and therapy assistants (PTA, OTA, SLPA). There are no participant substitutions due to the pre-requisite requirement. The curriculum may be utilized only under conditions set forth by AHA, Inc.**

**Cancellation Policies:** AHA, Inc. reserves the right to adjust course dates, times and faculty to accommodate unforeseen including cancellation of the course due to insufficient registration up to 3 weeks prior to the scheduled start date. Notification will only be made to advanced registrants. Neither AHA, Inc. nor the course location is responsible for any expenses incurred by registrants due to such adjustments.

Participant cancellation requests must be made in writing no less than 3 weeks prior to the course start date to receive a refund, minus a \$100 administrative fee. No refunds will be given for cancellations received within three weeks prior to the start of the course.



“AHA, Inc. is an AOTA Approved Provider of continuing education. Provider #: 11414. Full attendance at this course qualifies for 6 contact hours or .6 CEUs in the Category of Domain of OT and Occupational Therapy Process. The assignment of AOTA CEUs does not imply endorsement of specific course content, products, or clinical procedures by AOTA. Course Level: Intermediate.”

AHA Inc. is an Approved Provider for continuing education for PT, and PTA's in New York, California and Rhode Island



“AHA, Inc. is approved by the Continuing Education Board of the American Speech-Language-Hearing Association (ASHA) to provide continuing education activities in speech-language pathology and audiology. Full attendance at this course qualifies for 6 contact hours or .6 CEUs the assignment of ASHA CEUs does not imply endorsement of course content, specific products, or clinical procedures. Course Level: Introductory.

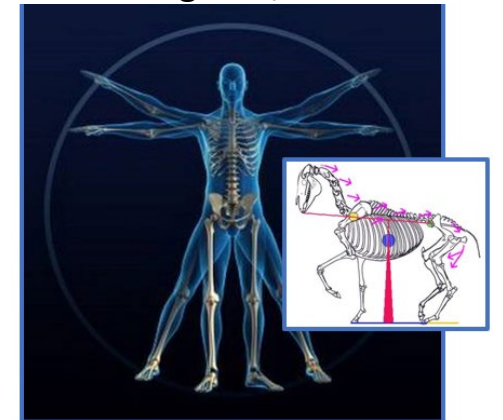
A certificate of attendance will be provided. Contact hours total 6.0. Courses are not pre-approved unless otherwise indicated



American Hippotherapy  
Association Inc.  
Presents

**The Core Connection**  
at  
Children's TherAplay Foundation  
9919 Towne Rd  
Carmel, Indiana

**August 9, 2019**



Please email or mail registration information to AHA Inc.  
[mwood@theahainc.org](mailto:mwood@theahainc.org)  
2537 Research Blvd. Suite 203  
Fort Collins, CO 80526

## The Core Connection:

In this course, we explore the concept that there is an inevitable connection between Hippotherapy and the horse's influence on the Core. We will look at the immediate connection between postural control and the functional improvements we are looking for in patients from a PT, OT, Speech or a trans-disciplinary focus. This AHA one-day course is open to all PT OT and SLP's and their licensed therapy assistants who use Hippotherapy as a treatment tool; intended as an advanced course following the AHA Level I & II curriculum. Lecture, video and discussion will guide us to explore these very key Core Concepts and Connections. The curriculum may be utilized only under conditions set forth by AHA, Inc.

### Topics to be covered:

- Terminology related to Core Stabilization.
- The neurophysiologic basis of Core Stabilization (sensory and motor control required for Core Stability) and the basic developmental process which leads to Core Stability.
- Common conditions in which Core Stability is impaired and the clinical manifestations
- Common indicators of poor Postural Control and reduced Core Stability as related to impaired function.
- Human function and the influence by Core Postural Control using Dynamic Systems Theory.
- Influence of equine movement on the Core – sensory and motor.
- Impacting function of the Core using equine movement.
- Specific strategies for impacting function through the Core using equine movement.
- The influence of the core and its impact on the domains of human function.

- POC options using Hippotherapy to improve patient function related to Core Stability.
- Human Core and the Horses Core

### Learning Outcomes

- Learners will be able to identify and recite the research and clinical markers that can be observed for normal core control.
- Learners will be able to compare and identify the impairments seen clinically that contribute poor core control for PT, OT and SLP treatment.
- Learners will be able to describe the principles of hippotherapy and how it relates to improving core control with strategies implemented in a PT, OT, SLP treatment using the ICF model.
- Learners will identify the interaction of the horse's core and the human core as applied using hippotherapy principles and application addressed in clinical treatment through video case analysis.
- Learners will demonstrate their understanding of the principles of movement in treatment addressing balance and postural control and identifying the rationale for 2 treatment strategies, per discipline that can be addressed in a patient's plan of care.
- Learners will explain the connection in core instability in various patients are addressed in hippotherapy by clinical problem solving and addressing the elements of core stability.
- Learners will be able to list 3 examples of how to implement hippotherapy into a plan of care with the AHA Best Practice Guidelines

This is a one-day course 9:00AM to 4:00PM

### TENTATIVE COURSE SCHEDULE

**9:00- Registration & Introductions**

**9:15- Objectives and Learning Outcomes**

**9:30-Definitions- HPOT /Core/ Discussion**

**10:00- Functional Anatomy**

**Muscles- posture, mvmt, respiration**

**Soft Tissue /Skeletal/ CNS/ Development**

**10:45 BREAK**

**11:00 Core Impairments /Core Control**

**VIDEO- function of pt.- class discussion of core contributions and function**

**11:30 How and Why Hippotherapy impacts the core? Systems approach why hippotherapy impacts the core**

**12:00 LUNCH**

**1:00 The Horses Core- Why does it matter? How to improve it VIDEO of good and poor quality movement**

**2:00 BREAK**

**2:15 How to enhance the core in hippotherapy**

**3:15 Human and Horse Core**

**4:00 Wrap Up- End**

### Registration Information

All attendees will receive an email with links to download course materials 2 weeks prior to the start of the course. Handouts will be printed and available to all attendees, these are different from the course ppt. No printed copies of these ppt silds will be available at the course. The course fee also includes lunch and snacks.



### Registration Form

Name: \_\_\_\_\_

Address: \_\_\_\_\_

City: \_\_\_\_\_ State: \_\_\_\_\_ Zip: \_\_\_\_\_

Phone: \_\_\_\_\_

Email: \_\_\_\_\_

\*AHA, Inc. Member#: \_\_\_\_\_

New memberships are accepted. Join today at [www.americanhippotherapyassociation.org](http://www.americanhippotherapyassociation.org).  
**\*\*\*Name with Credentials as listed on course certificate:**

**Please notify the AHA, Inc. office prior to completing this registration of your special needs such as food, access or allergies.**

**Registration is limited. Please attached copies of Level &Level II Certificates**

Early registration on or before July 18, 2019  
\_\_\_\_\_ \$200.00 for AHA, Inc. Member  
\_\_\_\_\_ \$275.00 for Non-AHA, Inc. Member

After July 18, 2019  
\_\_\_\_\_ \$275.00 for AHA, Inc. Member  
\_\_\_\_\_ \$350.00 for Non-AHA, Inc. Member  
\_\_\_ Check - payable to AHA Inc.  
\_\_\_ Charge MC VISA AM EX

Name on Card \_\_\_\_\_

Card Number \_\_\_\_\_

Exp. Date \_\_\_\_\_ Security Code \_\_\_\_\_

Billing zip code \_\_\_\_\_